

It's your right to choose - add CSDVRS to your Videophone!

Per FCC regulations, VP-100™ and VP-200™ may be used to contact any VRS provider!



VP-100™



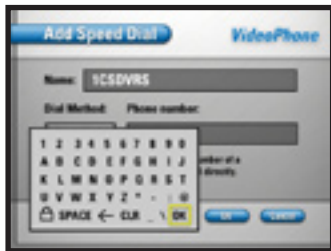
Step 1 • Main Menu:
Select "Dial"



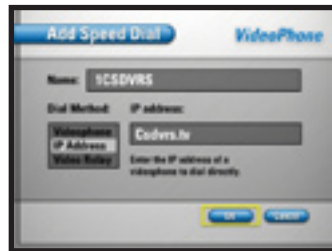
Step 2 • Dial List:
Select "Speed Dial"



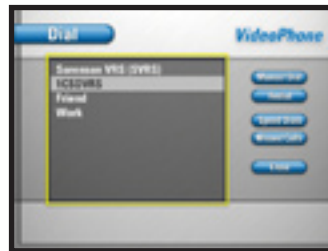
Step 3 • Speed Dial List:
Select "Add"



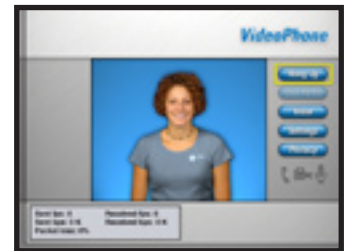
Step 4 • Add Speed Dial:
In the Name box, press "Enter" and use arrows to select letters or numbers.



Step 5 • Add Speed Dial:
Enter the information
Name: 1CSDVRS
Dial Method: IP Address
IP Address: Csdvrs.tv
Select "OK"



Step 6 • Using CSDVRS:
Select "1CSDVRS" to call CSDVRS!



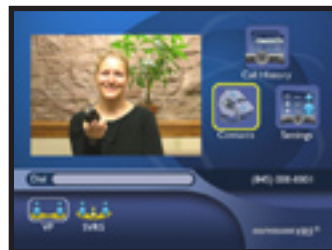
Step 7 • Using CSDVRS:
Connect with CSDVRS!

We can come to your home or office to help!

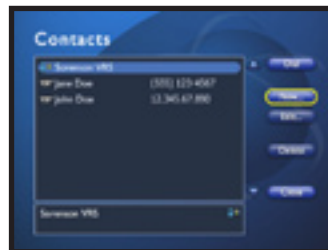
VP: help.csdvrs.tv
Email: help@csdvrs.com



VP-200™



Step 1 • Main Menu:
Select "Contacts"



Step 2 • Contacts:
Select "New..."



Step 3 • Add Contact:
Select "Name"



Step 4 • Add Contact:
In the Name box, press "Keyboard" and use arrows to select letters or numbers.



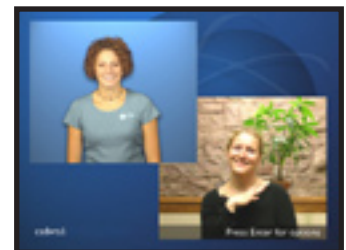
VP-200 Remote



Step 5 • Add Contact:
Enter the information
Name: 1CSDVRS
Dial: csdvrs.tv
Type: Video Point-to-Point
Select "OK"



Step 6 • Contacts:
Select "1CSDVRS" to call CSDVRS!



Step 7 • Using CSDVRS:
Connect with CSDVRS!

Try CSDVRS today!



"Sorenson Communications", "VP-100" and "VP-200" are the trademarks of Sorenson Communications Inc.